

# **Agilent Seahorse XFp Glycolysis Stress Test Kit**

**User Guide**  
**Kit 103017-100**

# Notices

© Agilent Technologies, Inc. 2017

No part of this manual may be reproduced in any form or by any means (including electronic storage and retrieval or translation into a foreign language) without prior agreement and written consent from Agilent Technologies, Inc. as governed by United States and international copyright laws.

## Manual Part Number

103017-400

## Kit Part Number

103017-100

## Edition

First edition, March 2017  
Revision E0

Printed in USA

Agilent Technologies, Inc.  
2850 Centerville Road  
Wilmington, DE 19808-1610 USA

## Warranty

**The material contained in this document is provided “as is,” and is subject to being changed, without notice, in future editions. Further, to the maximum extent permitted by applicable law, Agilent disclaims all warranties, either express or implied, with regard to this manual and any information contained herein, including but not limited to the implied warranties of merchantability and fitness for a particular purpose. Agilent shall not be liable for errors or for incidental or consequential damages in connection with the furnishing, use, or performance of this document or of any information contained herein. Should Agilent and the user have a separate written agreement with warranty terms covering the material in this document that conflict with these terms, the warranty terms in the separate agreement shall control.**

## Technology Licenses

The hardware and/or software described in this document are furnished under a license and may be used or copied only in accordance with the terms of such license.

## Restricted Rights Legend

If software is for use in the performance of a U.S. Government prime contract or sub-contract, Software is delivered and licensed as “Commercial computer software” as defined in DFAR 252.227-7014 (June 1995), or as a “commercial item” as defined in FAR 2.101(a) or as “Restricted computer software” as defined in FAR 52.227-19 (June 1987) or any equivalent agency regulation or contract clause. Use, duplication or disclosure of Software is subject to Agilent Technologies’ standard commercial license terms, and non-DOD Departments and Agencies of the U.S. Government will receive no greater than Restricted Rights as defined in FAR 52.227-19(c)(1-2) (June 1987). U.S. Government users will receive no greater than Limited Rights as defined in FAR 52.227-14

(June 1987) or DFAR 252.227-7015 (b)(2) (November 1995), as applicable in any technical data.

## Safety Notices

### CAUTION

A **CAUTION** notice denotes a hazard. It calls attention to an operating procedure, practice, or the like that, if not correctly performed or adhered to, could result in damage to the product or loss of important data. Do not proceed beyond a **CAUTION** notice until the indicated conditions are fully understood and met.

### WARNING

A **WARNING** notice denotes a hazard. It calls attention to an operating procedure, practice, or the like that, if not correctly performed or adhered to, could result in personal injury or death. Do not proceed beyond a **WARNING** notice until the indicated conditions are fully understood and met.

# Contents

## Introduction

Introduction 6

Glossary 7

## Kit Information

Kit Contents 10

Kit Storage 11

## Assay

Day Prior to Assay 14

Day of Assay 15

Data Analysis 19





# 1 Introduction

Introduction 6

Glossary 7

The Agilent Seahorse XF Glycolysis Stress Test is the standard assay for measuring glycolytic function in cells. By directly measuring the extracellular acidification rate (ECAR) ([Figure 1](#) on page 7), the Agilent Seahorse XF Glycolysis Stress Test used on the Agilent Seahorse XFp Extracellular Flux Analyzer provides a standard and comprehensive method to assess the key parameters of glycolytic flux: Glycolysis, Glycolytic Capacity, Glycolytic Reserve, as well as Non-glycolytic Acidification. (Refer to [“Glossary”](#) on page 7 for more details.)



## Introduction

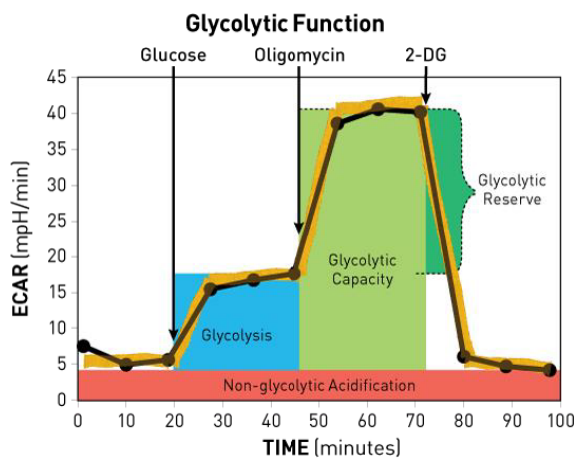
Glycolysis and oxidative phosphorylation are the two major energy-producing pathways in the cell. Most cells possess the ability to switch between these two pathways, thereby adapting to changes in their environment. Glucose in the cell is converted to pyruvate (referred to as glycolysis), and then converted to lactate in the cytoplasm, or CO<sub>2</sub> and H<sub>2</sub>O in the mitochondria. The conversion of glucose to pyruvate, and subsequently lactate, results in a net production and extrusion of protons into the extracellular medium (Figure 2 on page 8). The extrusion of protons results in the acidification of the medium surrounding the cell. The Agilent Seahorse XFp Analyzer directly measures the acidification rate, and reports this as ECAR.

The assay workflow is as follows. First, cells are incubated in the glycolysis stress test medium without glucose or pyruvate, and the ECAR is measured. The first injection is a saturating concentration of glucose (10 mM). The cells utilize the glucose injection and catabolize it through the glycolytic pathway to pyruvate, producing ATP, NADH, water, and protons. The cofactor NAD<sup>+</sup>, regenerated in the cytosol by the conversion of pyruvate and protons to lactate, is secreted by the cell. The extrusion of protons into the surrounding medium causes a rapid increase in ECAR. This glucose-induced response is reported as the rate of glycolysis under basal conditions.

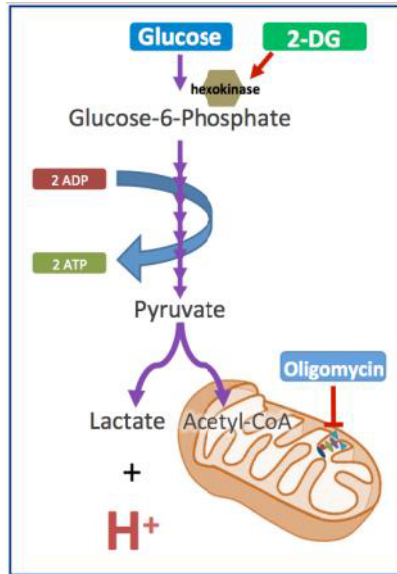
The second injection is oligomycin, an ATP synthase inhibitor. Oligomycin inhibits mitochondrial ATP production, and shifts the energy production to glycolysis, with the subsequent increase in ECAR revealing the cellular maximum glycolytic capacity. The final injection is 2-deoxy-glucose (2-DG, 50 mM), a glucose analog, which inhibits glycolysis through competitive binding to glucose hexokinase, the first enzyme in the glycolytic pathway. The resulting decrease in ECAR confirms that the ECAR produced in the experiment is due to glycolysis. The difference between glycolytic capacity and glycolysis rate defines glycolytic reserve. ECAR, prior to glucose injection, is referred to as non-glycolytic acidification; caused by processes in the cell other than glycolysis.

## Glossary

- **Glycolysis:** The process of converting glucose to pyruvate. The Agilent Seahorse XF Glycolysis Stress Test presents the measure of glycolysis as the ECAR rate reached by a given cell after the addition of saturating amounts of glucose.
- **Glycolytic capacity:** This measurement is the maximum ECAR rate reached by a cell following the addition of oligomycin, effectively shutting down oxidative phosphorylation and driving the cell to use glycolysis to its maximum capacity.
- **Glycolytic reserve:** This measure indicates the capability of a cell to respond to an energetic demand as well as how close the glycolytic function is to the cell's theoretical maximum.
- **Nonglycolytic acidification:** This measures other sources of extracellular acidification that are not attributed to glycolysis.



**Figure 1** Agilent Seahorse XF Glycolysis Stress Test profile of the key parameters of glycolytic function. Sequential compound injections measure glycolysis, glycolytic capacity, and allow calculation of glycolytic reserve and nonglycolytic acidification.



**Figure 2** Agilent Seahorse XF Glycolysis Stress Test Modulators of Glycolysis. This diagram illustrates a simplified version of glycolysis and the sites of action of the kit components. Glucose fuels glycolysis. Oligomycin inhibits ATP synthase in the mitochondria resulting in an increased dependence on glycolysis. 2-DG is a competitive inhibitor of glucose and functions to shut down glycolysis.

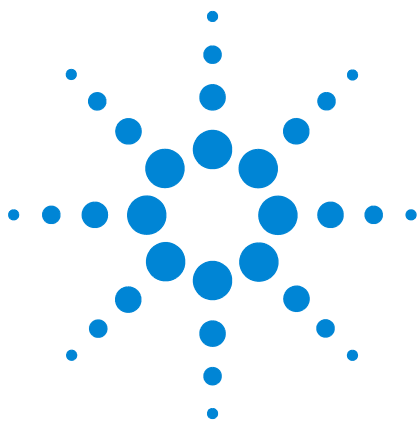
**Table 1** Agilent Seahorse XFp Glycolysis Stress Test Kit Reagents (in order of injection).

Compound(s)	Target	Effect on ECAR
Glucose	Glycolysis	Increase
Oligomycin <sup>*</sup>	ATP Synthase Complex V	Increase
2-DG <sup>†</sup>	Glycolysis	Decrease

<sup>\*</sup> Oligomycin is a mixture of Oligomycin A, B, and C with Oligomycin A  $\geq$  60%.

<sup>†</sup> 2-DG may appear clear, opaque (white), or as a mix of white solid and clear liquid. Appearance does not affect performance.





## 2 Kit Information

Kit Contents 10

Kit Storage 11

## Kit Contents

The Agilent Seahorse XFp Glycolysis Stress Test Kit includes:

- Six foil pouches each containing oligomycin
- Six vials containing glucose
- Six vials containing 2-DG

Kit reagents are sufficient for six complete Agilent Seahorse XFp Glycolysis Stress Test assays in the Agilent Seahorse XFp Miniplate.

**Table 2** Agilent Seahorse XF Glycolysis Stress Test Kit contents.

Compound	Cap color	Quantity per tube
Glucose	Blue	30 $\mu$ mol
Oligomycin	Light blue	14.4 nmol
2-DG	Green	150 $\mu$ mol

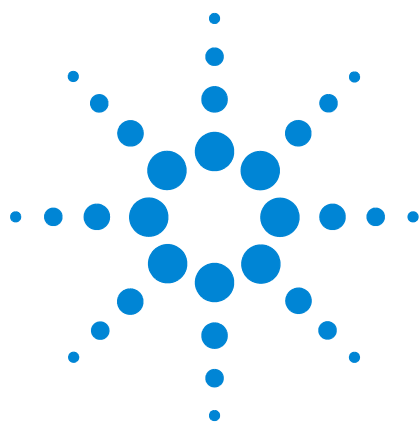
## Kit Storage

Product ships at ambient temperature, and should be stored at room temperature.

**Table 3** Additional required items.

<b>Item</b>	<b>Supplier</b>	<b>Part number</b>
Agilent Seahorse XFp analyzer	Agilent Technologies	102745-100
Agilent Seahorse XFp FluxPak (cartridges, miniplates, and calibrant)	Agilent Technologies	103022-100
Agilent Seahorse XF Base Medium	Agilent Technologies	102353-100, 103193-100
L- Glutamine	Sigma	G8540 or equivalent

## Kit Information

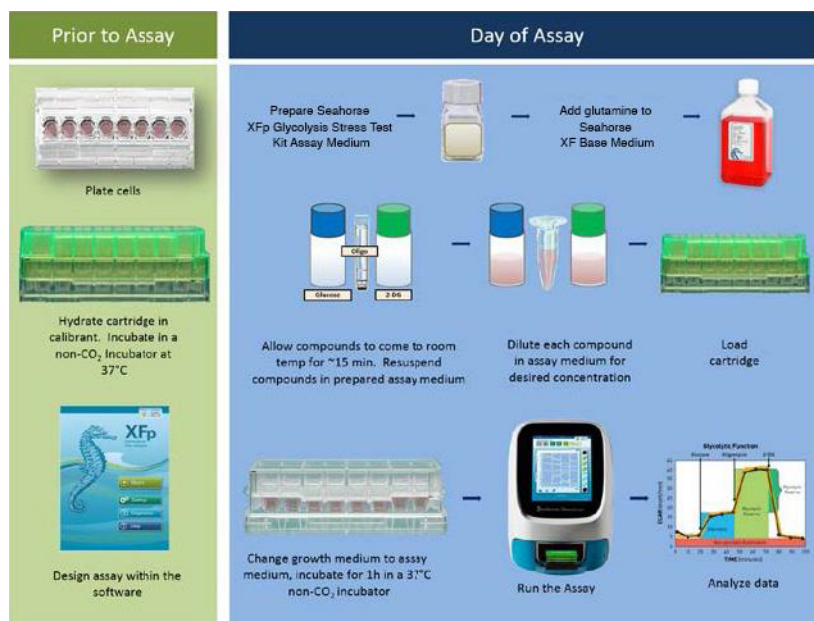


### 3 Assay

Day Prior to Assay 14

Day of Assay 15

Data Analysis 19



**Figure 3** Agilent Seahorse XFp Glycolysis Stress Test Workflow.



## Day Prior to Assay

- 1 Hydrate an XFp sensor cartridge in XF Calibrant at 37 °C in a non-CO<sub>2</sub> incubator overnight. (Refer to *Hydrating the Sensor Cartridge for the XFp Analyzer* in the Basic Procedures section, [www.agilent.com/en-us/products/cell-analysis-\(seahorse\)/seahorse-analyzers/seahorse-xfp-analyzer/basic-procedures-to-run-an-xfp-assay](http://www.agilent.com/en-us/products/cell-analysis-(seahorse)/seahorse-analyzers/seahorse-xfp-analyzer/basic-procedures-to-run-an-xfp-assay).)
- 2 For adherent cells, plate cells in the XFp Cell Culture Miniplate at the desired density using the appropriate cell culture growth medium. Add sterile water or PBS to the moat chambers to prevent evaporation of the culture medium. (Refer to *Cell Characterization Data Table* and *Seeding Adherent Cells in XFp Cell Culture Miniplates* in the Basic Procedures section, [www.agilent.com/en-us/products/cell-analysis-\(seahorse\)/seahorse-analyzers/seahorse-xfp-analyzer/basic-procedures-to-run-an-xfp-assay](http://www.agilent.com/en-us/products/cell-analysis-(seahorse)/seahorse-analyzers/seahorse-xfp-analyzer/basic-procedures-to-run-an-xfp-assay).)
- 3 For suspension cells, determine the desired density, then plan to seed cells on the day of the assay. (Refer to *Seeding Suspension Cells in XFp Cell Culture Miniplates* in the Basic Procedures section, [www.agilent.com/en-us/products/cell-analysis-\(seahorse\)/seahorse-analyzers/seahorse-xfp-analyzer/basic-procedures-to-run-an-xfp-assay](http://www.agilent.com/en-us/products/cell-analysis-(seahorse)/seahorse-analyzers/seahorse-xfp-analyzer/basic-procedures-to-run-an-xfp-assay).)

## Day of Assay

### Prepare assay medium

- 1 Prepare assay medium by supplementing Seahorse XF Base Medium. It is best to use 2 mM glutamine, as a starting point; however, desired medium composition can be varied depending on cell type or *in vitro* culture conditions.
- 2 Warm assay medium to 37 °C.
- 3 Adjust pH to 7.4 with 0.1 N NaOH (Note: Seahorse recommends sterile filtration following pH adjustment).
- 4 Keep at 37 °C until ready to use.

### Prepare stock compounds

Important: Use compounds the same day they are reconstituted. Do not refreeze. Discard any remaining compound.

- 1 The Seahorse XFp Glycolysis Stress Test Kit includes:
  - Six foil pouches each containing oligomycin
  - Six vials containing glucose
  - Six vials containing 2-DG

The kit reagents are sufficient for six complete Seahorse XF Glycolysis Stress Test assays in the Seahorse XFp Miniplate.

- 2 Open the foil pouches containing oligomycin, and remove one vial containing glucose and one vial containing 2-DG from the kit box.
- 3 Resuspend each component with prepared assay medium in volumes described in Table 3 with a p1000 pipette. Gently pipette up and down (~10 times) to solubilize the compounds. Vortex the 2-DG for approximately 1 minute to ensure that it goes into solution.

Hold the tube in gloved hand, and roll thumb in forward motion over cap to loosen or, using the decapping tool provided, insert the tooth of a decapper into the inner lip of the cap, and gently rotate the tool backwards.



**Figure 4** Removing reagent caps.

**Table 4** Stock solution.

Compound	Volume of assay medium	Final stock concentration
Glucose	300 $\mu$ L	100 mM
Oligomycin	288 $\mu$ L	50 $\mu$ M
2-DG	300 $\mu$ L	500 mM

### Prepare compounds for loading in sensor cartridge

There are two approaches to loading the injection ports of the sensor cartridge:

- **Constant loading volume/variable compound concentration:** This approach entails loading a constant volume of compound in each injection port and requires that each compound be prepared at a different concentration
- **Constant compound concentration/variable loading volume:** This approach entails preparing the compounds at a constant concentration and requires that a different volume of each compound be loaded in the injection port.

[Table 5](#) on page 17 describes how to prepare to load the cartridges using both options. If using the constant volume option, media can be added directly to the glucose vial. If using the constant concentration option, no additional media is necessary. For oligomycin (with either loading option) pipette the stock volume into a microfuge tube, and add the given volume of media. No media addition is necessary for 2-DG when running a standard assay.



**Table 5** Compound preparation for loading sensor cartridge ports.

Agilent Seahorse XFp Analyzer		Constant volume				Constant concentration			
		Starting well volume: 175 $\mu$ L assay medium				Starting well volume: 180 $\mu$ L assay medium			
Port A Glucose	[Final well] (mM)	Stock volume ( $\mu$ L)	Media volume ( $\mu$ L)	8X [Port] (mM)	Add to port ( $\mu$ L)	Stock volume ( $\mu$ L)	Media volume ( $\mu$ L)	10X [Port] (mM)	Add to port ( $\mu$ L)
	10	300	75	80	25	300	0	100	20
Port B Oligomycin	[Final well] ( $\mu$ M)	Stock volume ( $\mu$ L)	Media volume ( $\mu$ L)	9X [Port] (iM)	Add to port ( $\mu$ L)	Stock volume ( $\mu$ L)	Media volume ( $\mu$ L)	10X [Port] (mM)	Add to port ( $\mu$ L)
	1.0	54	246	9	25	60	240	10	22
Port C 2-DG	[Final well] ( $\mu$ M)	Stock volume ( $\mu$ L)	Media volume ( $\mu$ L)	10X [Port] (mM)	Add to port ( $\mu$ L)	Stock volume ( $\mu$ L)	Media volume ( $\mu$ L)	10X [Port] (mM)	Add to port ( $\mu$ L)
	50	300	0	500	25	300	0	500	25

Seahorse recommends 1  $\mu$ M oligomycin; however, this can be varied if necessary given the specific sample conditions.

### Load sensor cartridge

Load compounds into the appropriate ports of a hydrated sensor cartridge.

- **Standard Assay:** No additional injection:

Port A: Glucose

Port B: Oligomycin

Port C: 2-DG

- **Modified Assay:** Additional injection included prior to glucose injection.

Port A: Test compound

Port B: Glucose

Port C: Oligomycin

Port D: 2-DG

**Table 6** Compound injection volumes involving an acute injection.

Agilent Seahorse XFp Analyzer	Constant volume		Constant concentration	
	Starting well volume: 175 µL assay medium		Starting well volume: 180 µL assay medium	
Port	Volume	Concentration	Volume	Concentration
A	25 µL	8X	20 µL	10X
B	25 µL	9X	22 µL	10X
C	25 µL	10X	25 µL	10X
D	25 µL	11X	27 µL	10X

### Prepare Agilent Seahorse XFp Cell Culture Miniplate for assay

- 1 Remove Seahorse XFp Cell Culture Miniplates from 37 °C CO<sub>2</sub> incubator and examine cells under microscope to confirm confluence.
- 2 Remove assay medium from water bath.
- 3 Change the cell culture growth medium in the cell culture miniplate to warmed assay medium using a multichannel pipette, and place the cell culture miniplate into a 37 °C non-CO<sub>2</sub> incubator for 45 minutes to 1 hour prior to the assay.
- 4 You are now ready to run the Seahorse XF Glycolysis Stress Test assay on the Seahorse XFp Analyzer.

### Run the Agilent Seahorse XF Glycolysis Stress Test

- 1 Click **Start** and select the **Seahorse Glycolysis Stress Test** default template. Click the right arrow on the Groups page, and then on the Protocol page. Click **Start Assay**.
- 2 Place the utility plate with the loaded assay cartridge on the instrument tray, and click **Continue**. Calibration takes approximately 20 minutes.  
**Note:** Remove the cartridge lid and verify correct plate orientation.
- 3 When calibration has been completed, remove the utility plate, place the Seahorse XFp Miniplate on the tray, and press **Continue** to start the assay.  
**Note:** Remove miniplate lid, and verify correct plate orientation.

## Data Analysis

The Seahorse XF Glycolysis Stress Test Report Generator automatically calculates the Seahorse XF Glycolysis Stress Test parameters from Wave data that has been exported to Excel. The Seahorse XF Stress Test Report Generator can be used with either a standard or modified stress test protocol, and provides a convenient, customizable, one-page assay summary.

The Seahorse XF Report Generator can be installed either alongside Wave or directly from the Agilent Technologies website. Visit

[http://www.agilent.com/en-us/support/cell-analysis-\(seahorse\)/seahorse-xf-report-generators](http://www.agilent.com/en-us/support/cell-analysis-(seahorse)/seahorse-xf-report-generators) to learn more about the Agilent Seahorse XF Stress Test Report Generators and download the User Guide.







**Agilent Technologies**

© Agilent Technologies, Inc.

Printed in USA, March 2017

Revision E0

For Research Use Only.

Not for use in diagnostic procedures.



**103017-400**