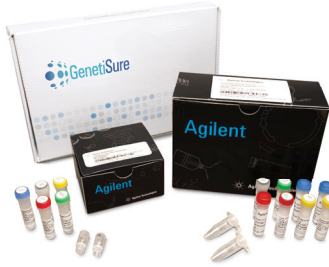




Pre-Implantation Genetic Screening GenetiSure Pre-Screen Kit

BE CONFIDENT. BE SURE.



Benefits

The GenetiSure Pre-Screen Kit is a cost effective solution that enables:

- Rapid identification of aneuploidies in single cells
- Detection of genomic aberrations in the 5-10Mb range
- A fast turn-around time of <8 hours from sample to data analysis
- Screening of up to 14 single cell samples per array

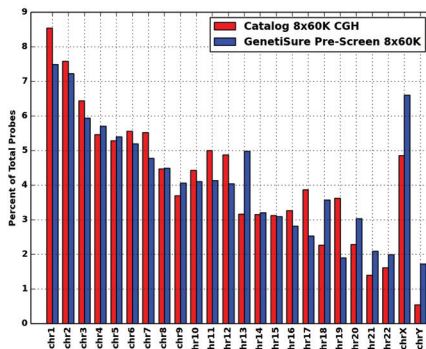


Figure 2: GenetiSure Pre-Screen 8x60K Array design with increased probe density on chromosomes 13, 18, 20, 21, 22, X, and Y.

Overview

The GenetiSure Pre-Screen Kit provides highly accurate and rapid screening of single cells from 3 and 5 day embryos.

The Pre-Screen Kit is based on Agilent's market leading high resolution CGH technology and with its modified workflow, the Kit allows for a turn-around time of <8 hours from sample to data analysis. The Kit contains microarrays as well as the necessary reagents for whole genome amplification and labeling of single cells and is compatible with Agilent's CytoGenomics Software (v3.0 or higher) for easy data interpretation.

Analyze single cells at the genomic level to uncover aneuploidy in embryos

Using the Pre-Screen Kit, single cells isolated from day 3 or day 5 embryos can be quickly and comprehensively screened for aneuploidy.

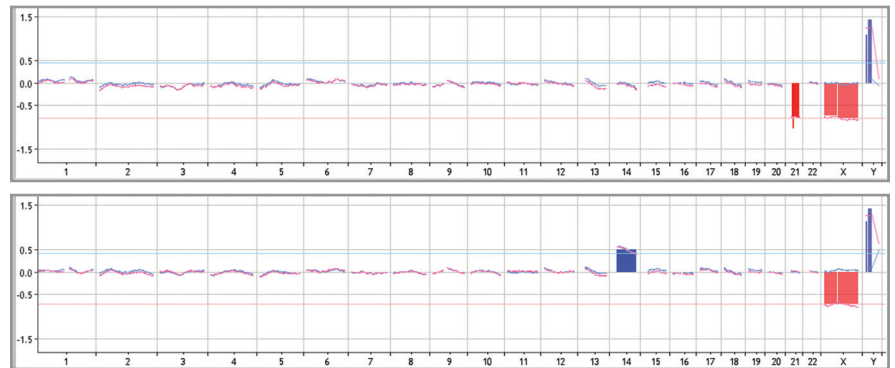


Figure 1: Whole genome copy number profiles of cells isolated from two different day 5 embryos displayed in Agilent CytoGenomics Software. The data is compared to both male (50Mb moving average line in blue) and female (50Mb moving average line in pink) references. The top data indicates that the cells isolated from the first embryo were male and contain a loss on chromosome 21. The bottom data indicates that the cells isolated from the second embryo were male and contain a gain on chromosome 14.



Data is obtained with a turn-around time of <8 hours from sample to data analysis, allowing you to quickly prioritize embryos for implantation. With a lower cost per sample than conventional or competitive methods, more embryos can be screened without significantly increasing costs.

Easy-to-use arrays intuitively integrate the GenetiSure Pre-Screen Kit into your lab workflow. The Kit contains all the labeling reagents and arrays you need to run your samples, with enough capacity per glass slide to run up to 14 samples and 2 reference samples simultaneously. The GenetiSure Pre-Screen Kit allows for maximum throughput and high efficiency for incorporation into your workflow.

Useful Tools

CytoGenomics Software

Agilent CytoGenomics provides a statistically and visually powerful tool to streamline the day-to-day cytogenetic sample analysis research workflow.

CytoGenomics Software Tutorials

Agilent's video tutorials are designed to show you how to leverage our software and products in your research.

Web Lab Training Videos

Hands-on laboratory training for multiple genomics workflows.

Learn more: www.agilent.com/genomics/cyto_software

What's in the Box

Each Kit can process 48 single cell samples.

GenetiSure Pre-Screen Kit (4x180K), P/N G5964A	
GenetiSure Pre-Screen Amplification and Labeling Kit with sufficient reagents for 36 samples and 12 reference samples	
GenetiSure Pre-Screen Array Kit 4x180K, 6 slides	
Hybridization Chamber Gasket Slide Kit 4-pack, 6 gasket slides	

GenetiSure Pre-Screen Kit (8x60K), P/N G5965A	
GenetiSure Pre-Screen Amplification and Labeling Kit with sufficient reagents for 42 samples and 6 reference samples	
GenetiSure Pre-Screen Array Kit 8x60K, 3 slides	
Hybridization Chamber Gasket Slide Kit 8-pack, 3 gasket slides	

Additional Components	
Human Cot-1 DNA	5190-3393
Agilent Oligo aCGH Hybridization Kit (25) or (100)	5188-5220 or 5188-5380
Agilent Oligo aCGH Wash Buffer 1 and 2 Set	5188-5226
Hybridization Chamber, stainless	G2534A
Hybridization Oven	G2545A
Hybridization Oven Rotator Rack	G2530-60029
SureScan Microarray Scanner	G4900DA
Agilent CytoGenomics 3.0 License (free)	

Category	GenetiSure Pre-Screen Array Kit 8x60K, 3 slides, P/N G5963A	GenetiSure Pre-Screen Array Kit 4x180K, 6 slides, P/N G5962A
Format	8x60K	4x180K
Design ID	067559	067649
Total Features	62,976	180,879
Control Grid Feature Count	3886	6539
Biological Features	55,090	170,340
Distinct Biological Features	54,911	83,208 present in duplicate
Median Probe Spacing	49,763	30,779
Average Probe Spacing	52,106	33,000
Chromosomes with Increased Density	13, 18, 20, 21, 22, X, and Y	13, 18, 20, 21, 22, X, and Y



FOR MORE INFORMATION

www.agilent.com/genomics/genetisure/prescreen

For Americas, call **800.227.9770** or for other regions, consult www.agilent.com/genomics/contactus

© Agilent Technologies, Inc., 2014
Published in USA, November 26, 2014
5991-5282EN

For Research Use Only. Not for use in diagnostic procedures.

