

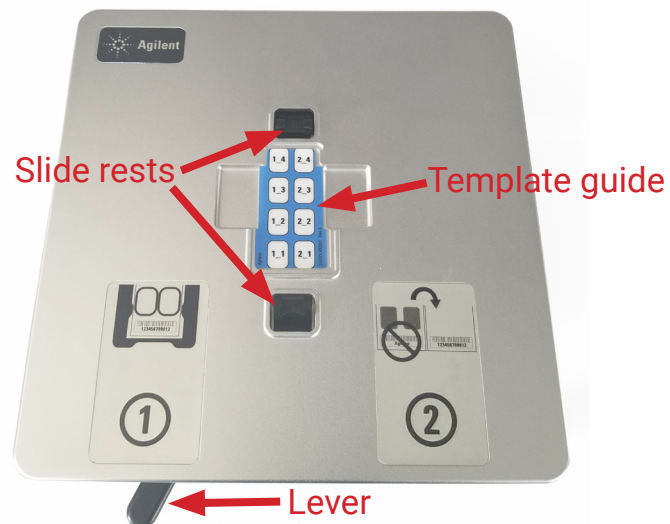
Agilent Hyb Station G5765A

User Guide



About the Hyb Station unit

The Agilent Hyb Station is a device that helps with assembly of Agilent microarray hybridization chambers prior to incubation in the hybridization oven, making the process easier and more reproducible.



Lever: In the image, the Hyb Station is oriented with the lever on the bottom, but it can be used in any orientation that is ergonomically comfortable for the user. When the lever is in position 1 (as shown) the slide rests are retracted. Moving the lever to position 2 moves the slide rests slightly inward, preparing them for slide placement.

Slide rests: During hybridization chamber set up, the prongs of the engaged slide rests prop up the microarray slide just above the gasket slide. Retracting the slide rests (by moving lever to position 1) drops the microarray slide into position on the gasket slide, sandwiching the two slides together.

Template guide: Use of a template guide is optional. Purchase additional template guides from Agilent (p/n G5765-87004) or download blank template guides from www.agilent.com.

Procedural Notes

- Place the Hyb Station on a flat, stable surface, such as a lab bench.
- Clean the Hyb Station between uses by wiping down exposed surfaces with a soft cloth or laboratory wipe moistened with 70% isopropanol or 70% ethanol. If contaminating RNA or DNA is a concern, wipe exposed surfaces with RNase decontamination wipes (e.g., RNaseZAP wipes, Thermo Fisher p/n AM9786) or with a DNA degradation solution (e.g., DNAZAP solution, Thermo Fisher p/n AM9890). Allow the device to dry fully before use.
- Ensure that your hybridization chamber base sits flat when seated in the Hyb Station. Replace any warped bases.
- After placing the microarray slide onto the slide rests, make sure that the slide is sitting on all 4 prongs of the slide rests to ensure proper placement when the slide rests are retracted.
- For best performance with 1-pack and 2-pack arrays, use the “drag and dispense” method for loading samples into the gasket wells. See the Hybridization Chamber User Guide (Agilent publication G2534-90004) for details.

Agilent Technical Support: www.agilent.com/en/contact-us/page

© Agilent Technologies, Inc. 2022–2023

No part of this manual may be reproduced in any form or by any means (including electronic storage and retrieval or translation into a foreign language) without prior agreement and written consent from Agilent Technologies, Inc. as governed by United States and international copyright laws.

Revision A1, October 2023



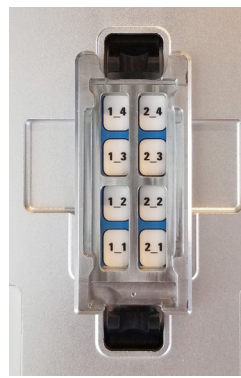
G5765-90000



1. Start with the lever in position 1.



2. Add template guide for your pack size (optional).



3. Add hyb chamber base in orientation shown.



4. Add gasket slide in orientation shown.



5. Move lever to pos 2 to prepare the slide rests for slide placement.



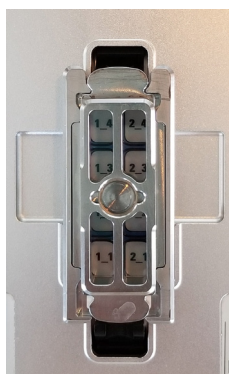
6. Load the samples into the gasket wells.



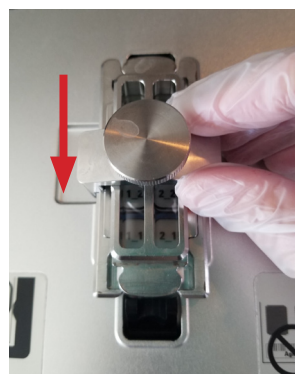
7. Place the microarray slide onto the slide rests (numeric barcode up).



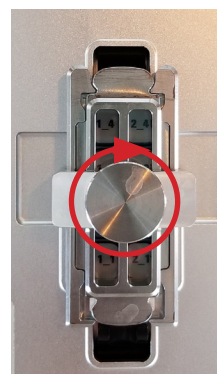
8. In one smooth motion, move lever to pos 1 to retract the slide rests.



9. Add hyb chamber cover.



10. Slip on clamp. Slide until it stops in the center of hyb chamber.



11. Fully tighten the thumbscrew. Hyb chamber is fully assembled.



Scan code to access a how-to video for the Agilent Microarray Hyb Station