

# Agilent's Industry-Leading GC/MS Systems

The right choice for reproducible results





# Tools, Techniques, and Turnaround Times

You can't go wrong with a GC/MS instrument from Agilent. We start with the world's most trusted gas chromatographs. Our latest models are super smart: they tell you when to change a column, let you know if there's a leak, and collect system information to help you be more productive. Then we pair those GCs with quadrupole, triple quadrupole, and time-of-flight mass spectrometers—so you can choose the technique that best suits your needs. Whether you're doing routine testing or cutting-edge research, we have a system for that. And we have lots of ways to accelerate your turnaround time.



Agilent Intuvo 9000 GC

Agilent 8860 GC

Agilent 8890 GC

# Systems



Agilent 5977B GC/MSD system

## Agilent 5977B GC/MSD system

### The source of new possibilities

Put the industry's most popular and powerful single quadrupole GC/MSD system to work for your lab—and watch productivity rise. This system is ideal for routine applications such as environmental, chemical, petrochemical, food, forensic, pharmaceutical, and material testing.



Agilent 7000D triple quadrupole GC/MS system

## Agilent 7000D triple quadrupole GC/MS system

### The definitive answer

The 7000D triple quadrupole GC/MS is the latest model of the most successful GC/MS/MS in history. The right choice for most applications, the 7000D is the fourth-generation version of the GC/TQ used by agencies around the world to create and validate many now-standard GC/MS/MS methods.



Agilent 7250 GC/Q-TOF system

### Agilent 7250 GC/Q-TOF system

#### See the whole picture

Identify unknown compounds and uncover additional data using the unique capabilities of our quadrupole time-of-flight GC/MS system, with its low energy capable electron ionization (EI) source. This revolutionary all-in-one system is ideal for performing complex metabolomics studies, screening for pesticides in challenging matrices, identifying analytes in herbal extracts, monitoring contaminant levels in fuel, and more.



Agilent 7010B triple quadrupole GC/MS system

### Agilent 7010B triple quadrupole GC/MS system

#### Expand your capabilities with sensitive, robust MS/MS

Meet the most sensitive version of our compact, benchtop triple quadrupole GC/MS. The 7010B triple quadrupole GC/MS delivers attogram detection limits in EIw mode. What's more, its breakthrough sensitivity lets you optimize sample preparation, reduce maintenance cycles by injecting less, and lower your detection limits.



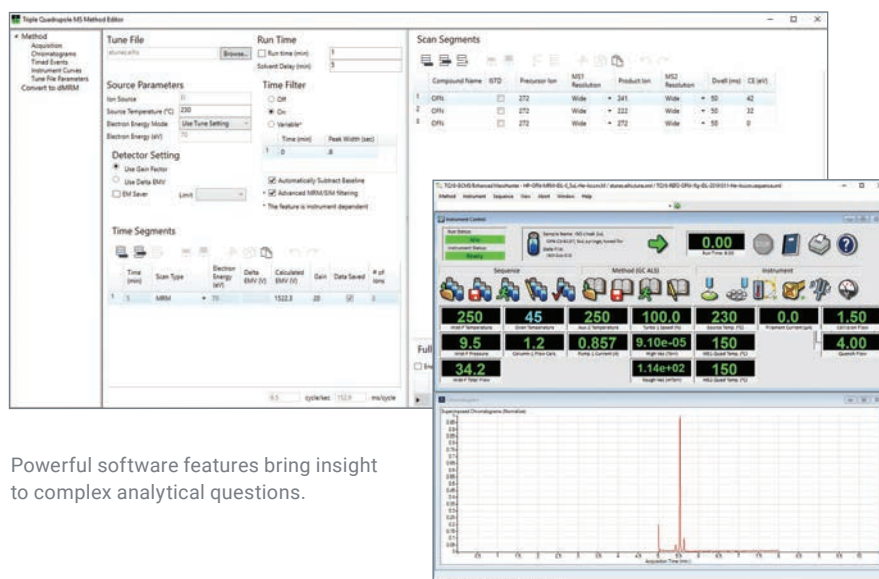
## Make Your Mass Spectrometry More Powerful

### The Agilent MassHunter suite

#### Simplify data analysis, review, and reporting

Looking for an easy way to control the latest GC technologies—including sampling techniques and dedicated GC detectors? MassHunter Acquisition enables any user to produce great results with Agilent GC/MS systems.

Time-saving tools such as autotune, MRM Optimizer, and spreadsheet sequence import unlock the power of your instrument for method development and high-throughput workflows. What's more, optional compliance features provide peace of mind for labs that require the highest levels of data integrity.



Powerful software features bring insight to complex analytical questions.

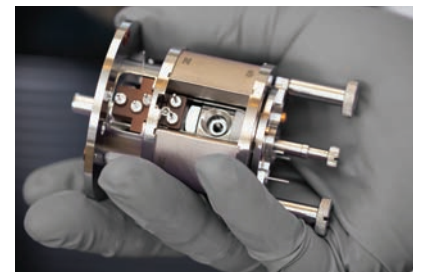


## Innovative Options

### Agilent JetClean self-cleaning ion source

#### Clean less, analyze more

During routine analysis, matrix deposits inevitably build up. As a result, users have had to routinely remove the ion source, scrub the lens and other components, then put it all back together and recalibrate the instrument. We offer a better option. Using a carefully controlled hydrogen flow, the Agilent JetClean self-cleaning ion source automatically removes even the most stubborn deposits.



### Agilent QuickProbe technology

#### Analyze samples in less than 60 seconds

With Agilent QuickProbe technology, your lab can quickly and directly analyze the composition of tablets, powders, and liquids to determine whether controlled substances are present. In fact, this real-time GC/MS technique enables you to identify compounds with little or no sample preparation.



## Agilent CrossLab services

CrossLab is an Agilent capability that integrates services and consumables to support workflow success and important outcomes like improved productivity and operational efficiency. Through CrossLab, Agilent strives to provide insight in every interaction to help you achieve your goals. CrossLab offers method optimization, flexible service plans, and training for all skill levels. We have many other products and services to help you manage your instruments and your lab for best performance.

Learn more about Agilent CrossLab, and see examples of insight that leads to great outcomes, at [www.agilent.com/crosslab](http://www.agilent.com/crosslab)

Learn more:

[www.agilent.com/chem/gc-ms](http://www.agilent.com/chem/gc-ms)

Find a local Agilent customer center:

[www.agilent.com/chem/contactus](http://www.agilent.com/chem/contactus)

U.S. and Canada

**1-800-227-9770**

[agilent\\_inquiries@agilent.com](mailto:agilent_inquiries@agilent.com)

Europe

[info\\_agilent@agilent.com](mailto:info_agilent@agilent.com)

Asia Pacific

[inquiry\\_lsca@agilent.com](mailto:inquiry_lsca@agilent.com)

DE.407337963

This information is subject to change without notice.

© Agilent Technologies, Inc. 2020  
Published in the USA, May 1, 2020  
5994-1859EN